

Read imperatively before use

LED strips wiring

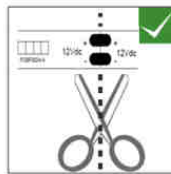
- ✓ As a rule, the LED strips can not be extended beyond 5m (refer to the datasheet)
- ✓ Do not connect the LED strips with rigid cables.
- ✓ The power supply rating and the cable sections must be adapted to the length and power of the LED strips (in compliance with the electrical standards and constraints)
- ✓ Always respect (+) red and (-) black polarities LED strips. Failure to do so may lead to heavily damage the product

LED strips mounting

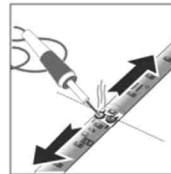
- ✓ LED strips may not under any circumstances be pierced, burned, bent excessively, sanded or filed. They must be mounted onto a thermally dissipative surface (aluminium or other) at least equal to three times the surface of the LED Strip
- ✓ Unroll LED reel before use
- ✓ LED strips are sold with different level of protection such as IP20 or IP65. The user is solely responsible for choosing the IP index suitable for his application. For example, IP20 is not suitable for use in dusty or wet environments
- ✓ Seal solder joints when product is to be used in humid atmosphere (Example : heat shrink tubing)
- ✓ LED reels should only be cut at the indicated locations (✂) or (⋮). In case of any doubt, please refer to chapter "LED strips cutting"
- ✓ LED strips must not be installed in confined spaces or in an environment where the temperature is above 40 ° C (TC max = 70° C on the printed circuit board at the measuring point or otherwise on a copper surface)
- ✓ Do not put anything on the LED (no clamping clip or other) : risk of alteration or breakage of the LED

**In general, the LED strips must always be installed in accordance with their data sheet
Failure to comply with these recommendations will void any warranty**

LED strips cutting

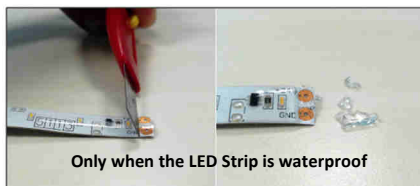


Ensure a clean and straight cut, respecting the dotted markings

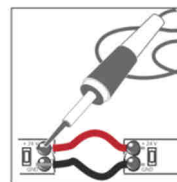


To separate the two soldered parts: desoldering the soldering points while gently pulling LED strips on each side

LED strips connection and soldering



Using a cutter, carefully remove the resin from the solder area without damaging the circuit board



- ✓ Using a soldering iron, solder the 2 points of both ends taking care to respect the polarity. The temperature of the soldering iron should not be higher than 280°C. Do not solder over 2 seconds.
- ✓ Do not solder more than twice on the same soldering pad
- ✓ For more informations on cabling, refer to paragraph "LED strips wiring" and their associated recommendations.
- ✓ Seal solder joints (Example : heat shrink tubing) (in case of waterproof LED strip)

LED strips power supplies



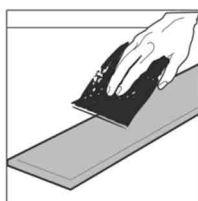
A power supply must be chosen according to:

- ✓ the voltage of the LED strip (LED strips 24 VDC with a 24 VDC power supply)
- ✓ the length of the LED strip to use ; Example : If 1 meter of LED strip consumes 15W, then 5 meters of this LED strip would require a power supply rated for 80W minimum

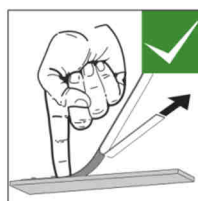
Connect the 2 wires (+ and -) of the LED strip respectively to the outputs (+ and -) of the 24VDC power supply.

Warning: before any connection, the reel must be unrolled completely

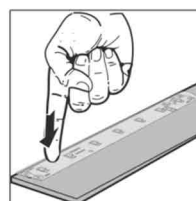
LED strips installation



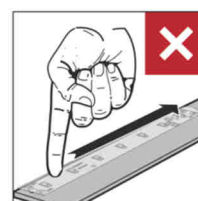
Before use, clean the installation surface



Start the installation at one end, then remove the protective tape from the adhesive on the back of the LED strip as it is laid



Make sure the LED strip is properly plated and tacked



Do not press horizontally as there is a risk of tearing joints and components

